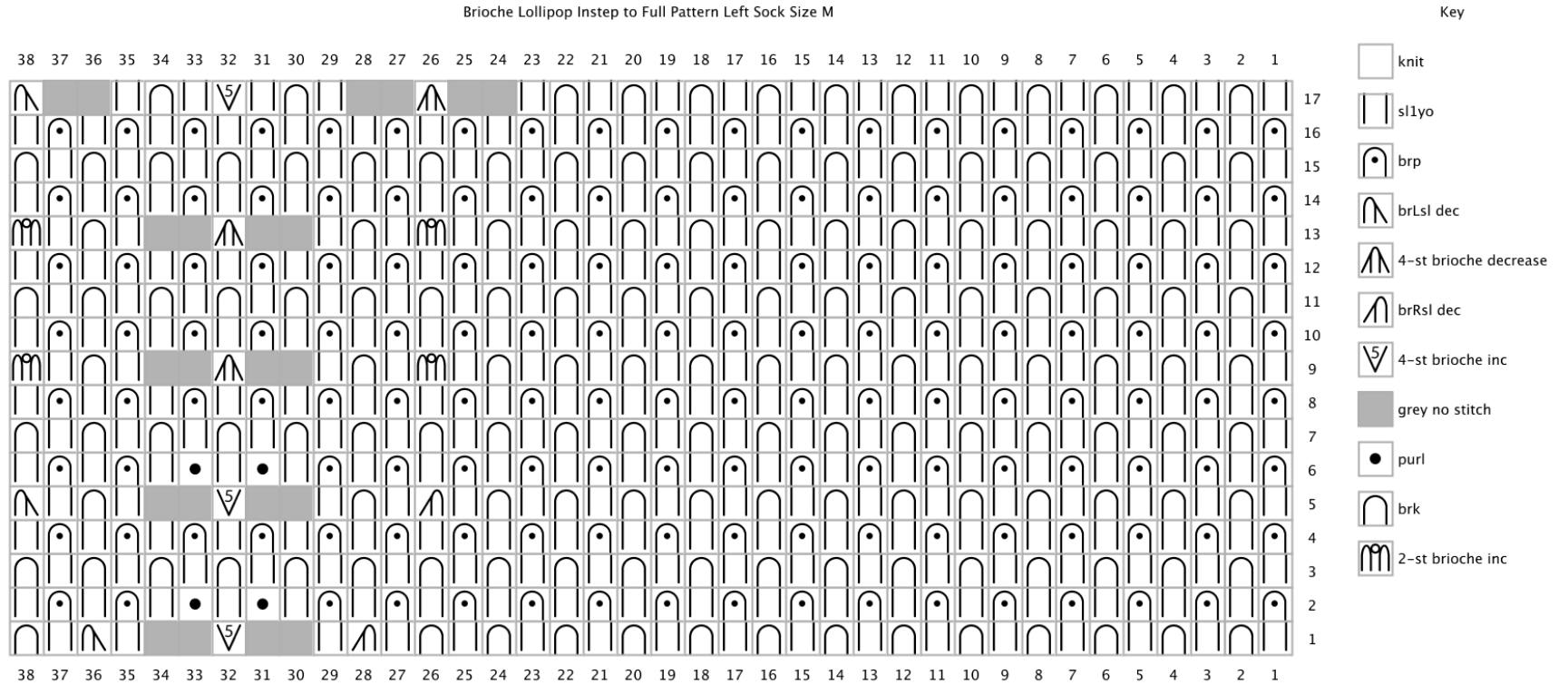




# Lollipop Socks, Charts for size M

## Instep Chart - Left

Brioche Lollipop Instep to Full Pattern Left Sock Size M

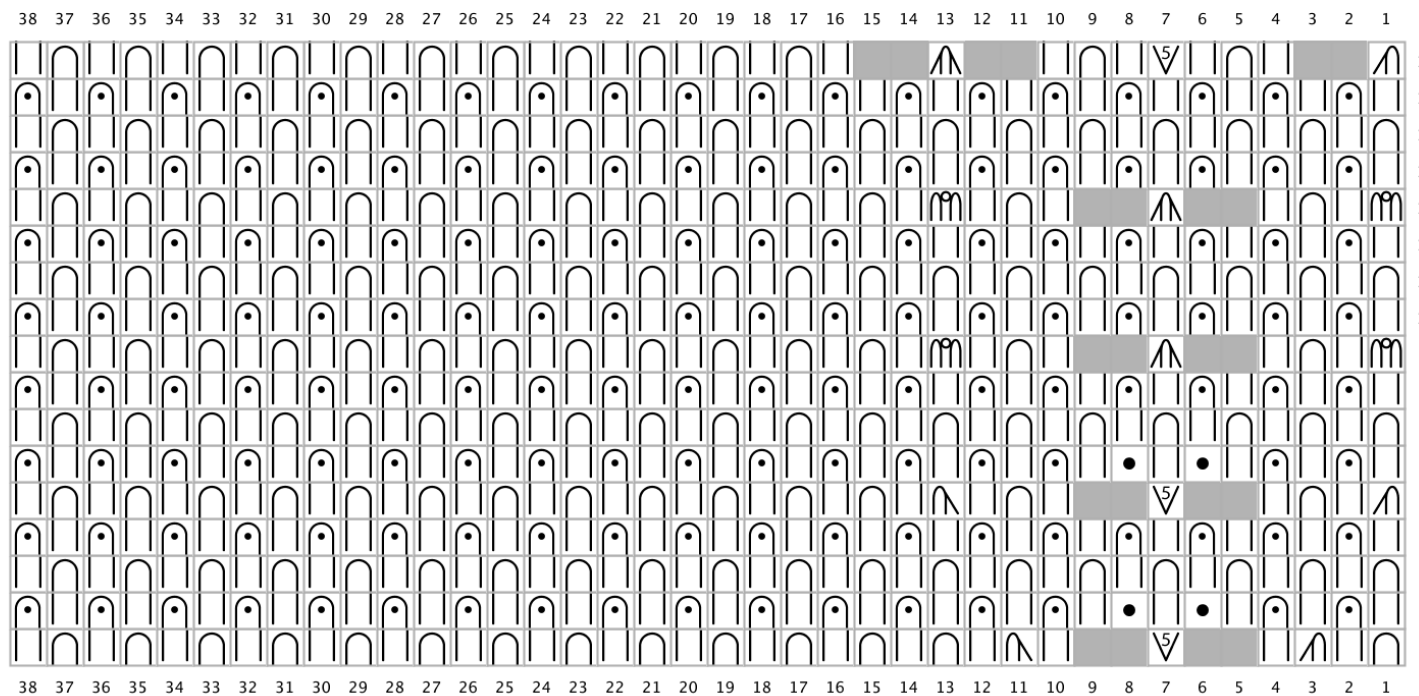




# Lollipop Socks, Charts for size M

## Instep Chart - Right

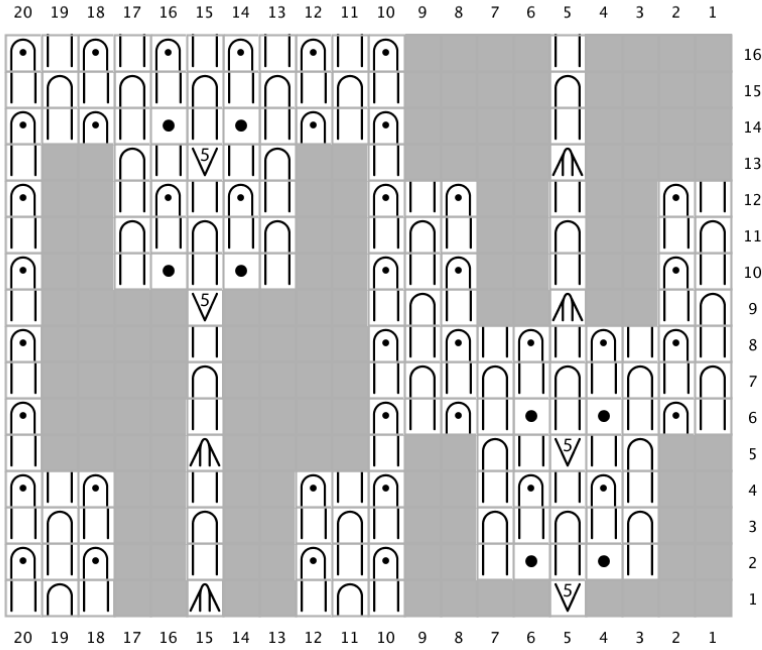
Brioche Lollipop Instep to Full Pattern Right Sock Size M



- Key
- knit
  - sl1yo
  - brp
  - brLsl dec
  - 4-st brioche decrease
  - brRsl dec
  - 4-st brioche increase
  - grey no stitch
  - purl
  - brk
  - 2-st brioche increase

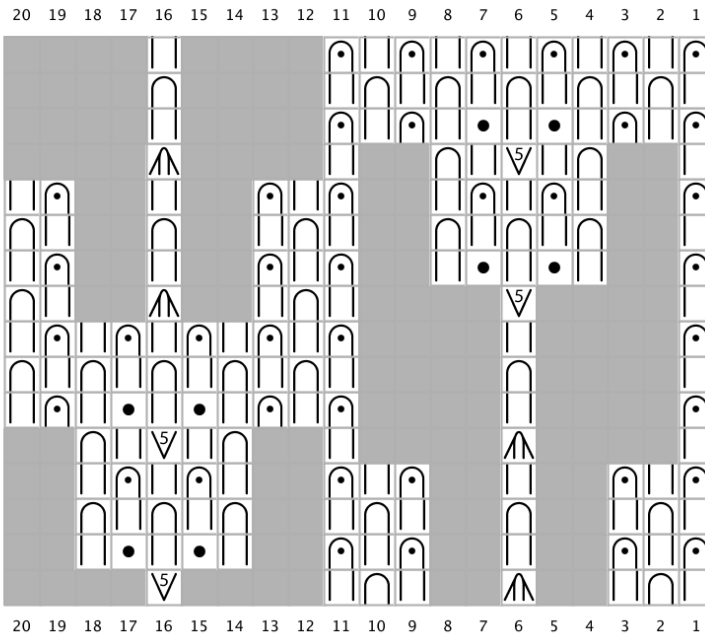
### Cuff Chart - Left

Left Cuff Pattern (all sizes)





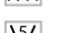





### Cuff Chart - Right

Right Cuff Pattern (all sizes)



Key

-  knit
-  sl1yo
-  brp
-  4-st brioche decrease
-  4-st brioche increase
-  grey no stitch
-  purl
-  brk