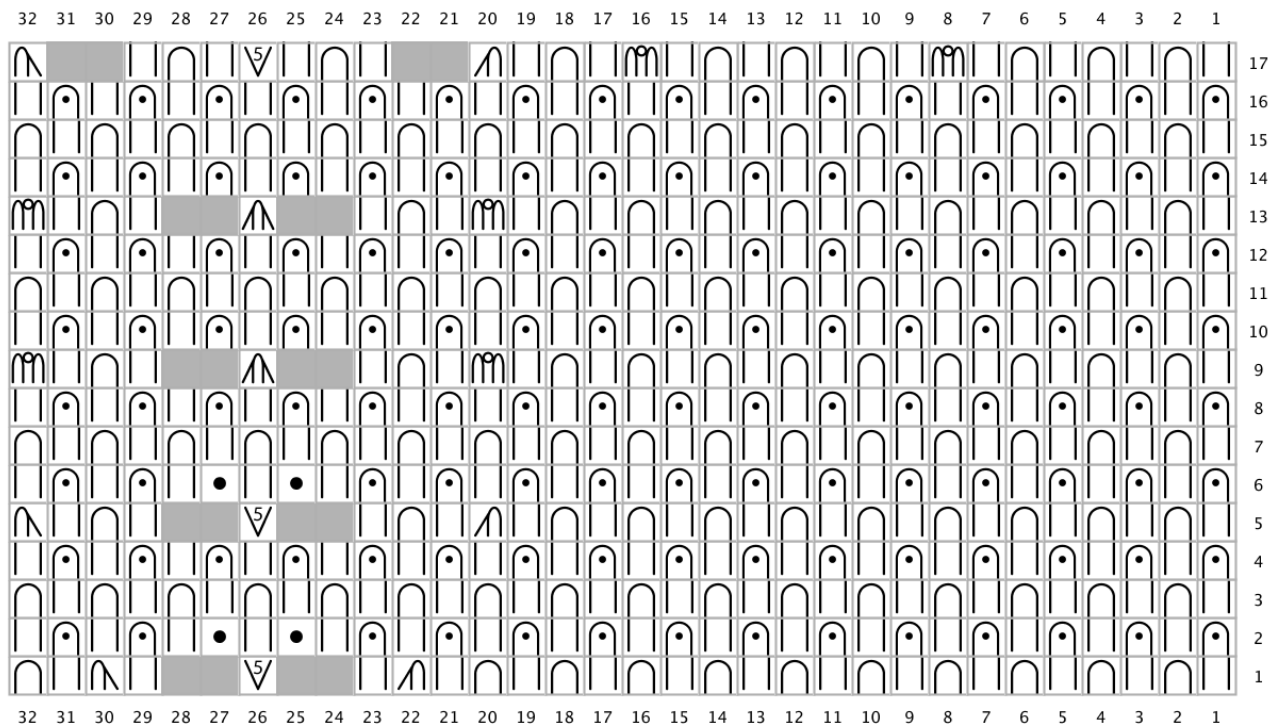




Lollipop Socks, Charts for size S

Instep Chart - Left

Brioche Lollipop Instep to Full Pattern Left Sock Size S



Key

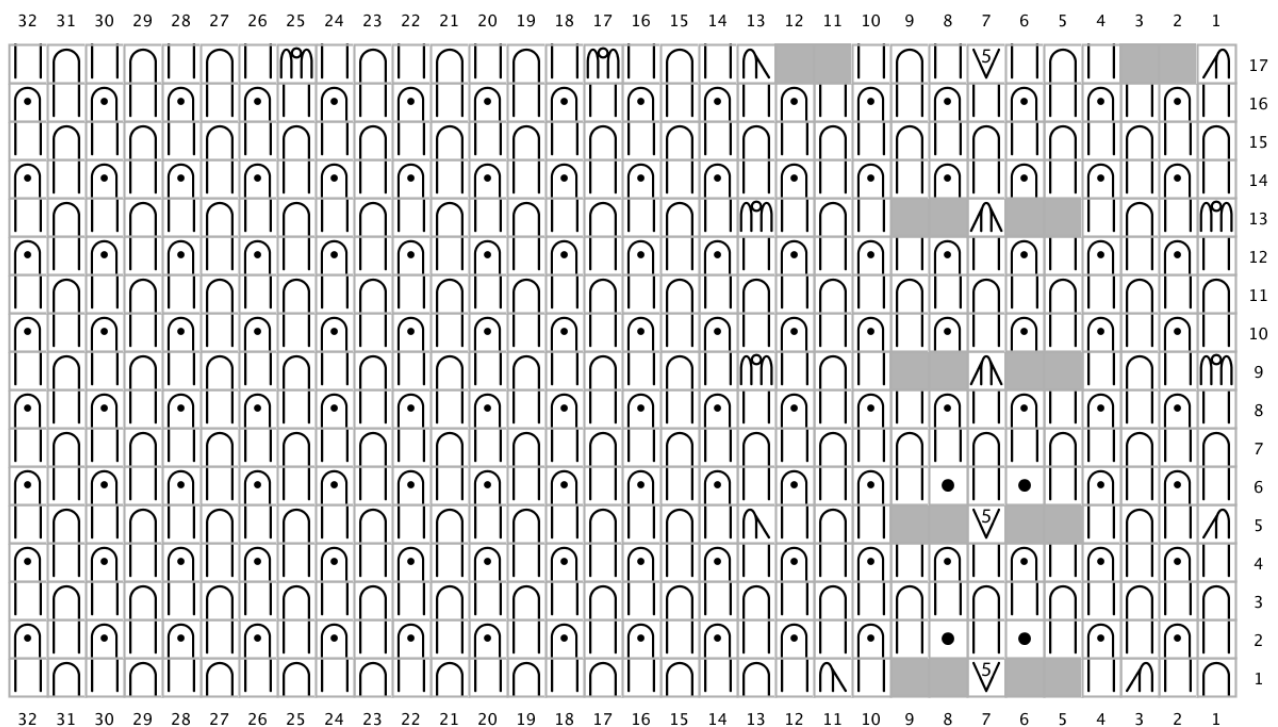
- knit
- sl1yo
- brp
- brLsl dec
- 4-st brioche decrease
- brRsl dec
- 4-st brioche inc
- 2-st brioche inc
- grey no stitch
- purl
- brk



Lollipop Socks, Charts for size S

Instep Chart - Right

Brioche Lollipop Instep to Full Pattern: Right Sock, Size S

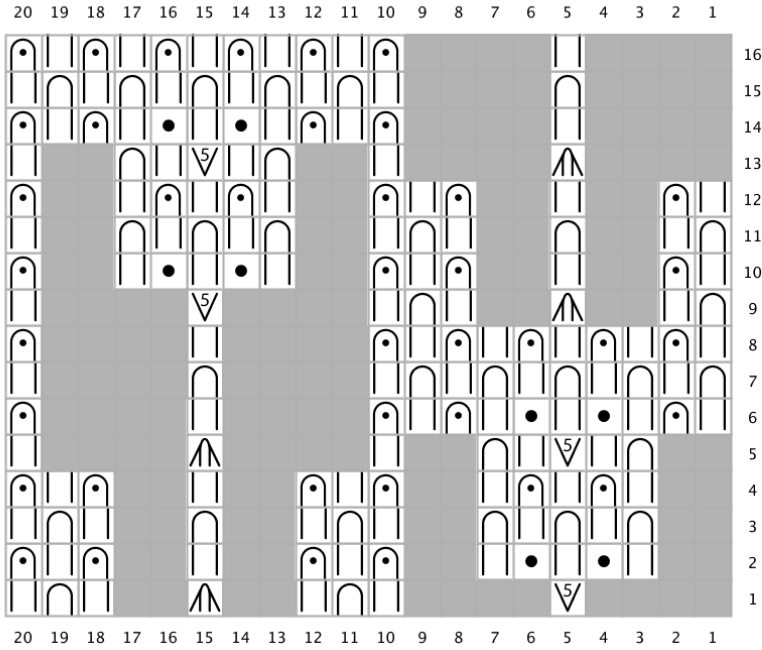


Key

-  knit
-  4-st brioche decrease
-  sl1yo
-  brk1
-  4-st brioche increase
-  grey no stitch
-  brRsl dec
-  brLsl dec
-  2-st brioche inc
-  brp1
-  purl

Cuff Chart - Left

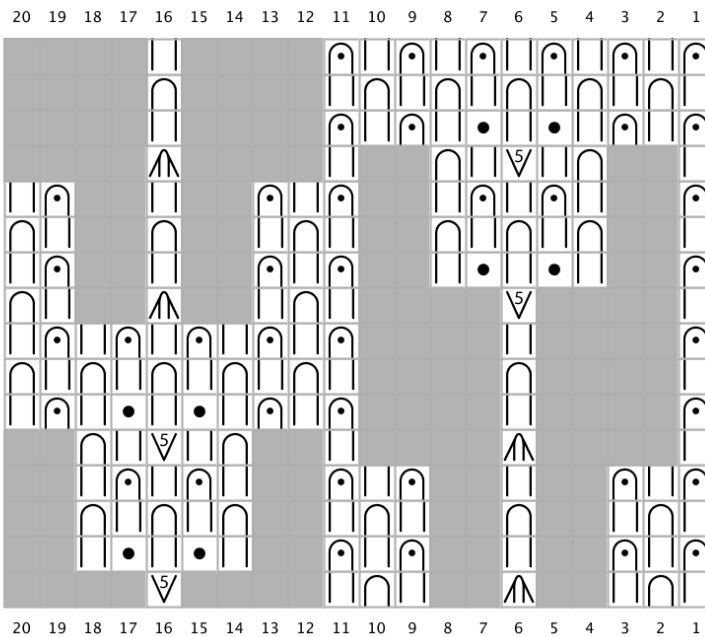
Left Cuff Pattern (all sizes)





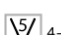


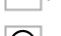


Cuff Chart - Right

Right Cuff Pattern (all sizes)

Key



-  knit
-  sl1yo
-  brp
-  4-st brioche decrease
-  4-st brioche increase
-  grey no stitch
-  purl
-  brk