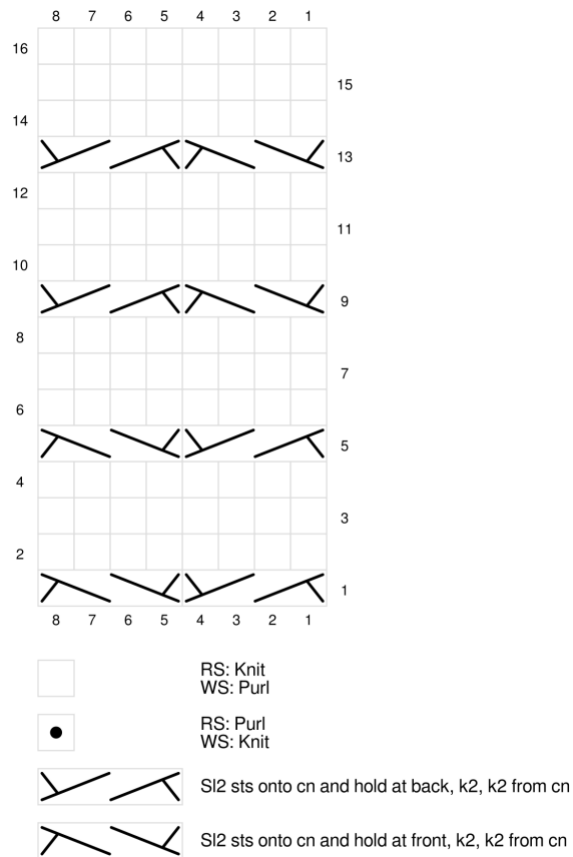


Chart A - Hugs & Kisses Cable



Row 1 (RS): 2/2 RC, 2/2 LC

Row 2 and all even(WS) rows: P8

Row 3: K8

Row 5: 2/2 RC, 2/2 LC

Row 7: K8

Row 9: 2/2 LC, 2/2 RC

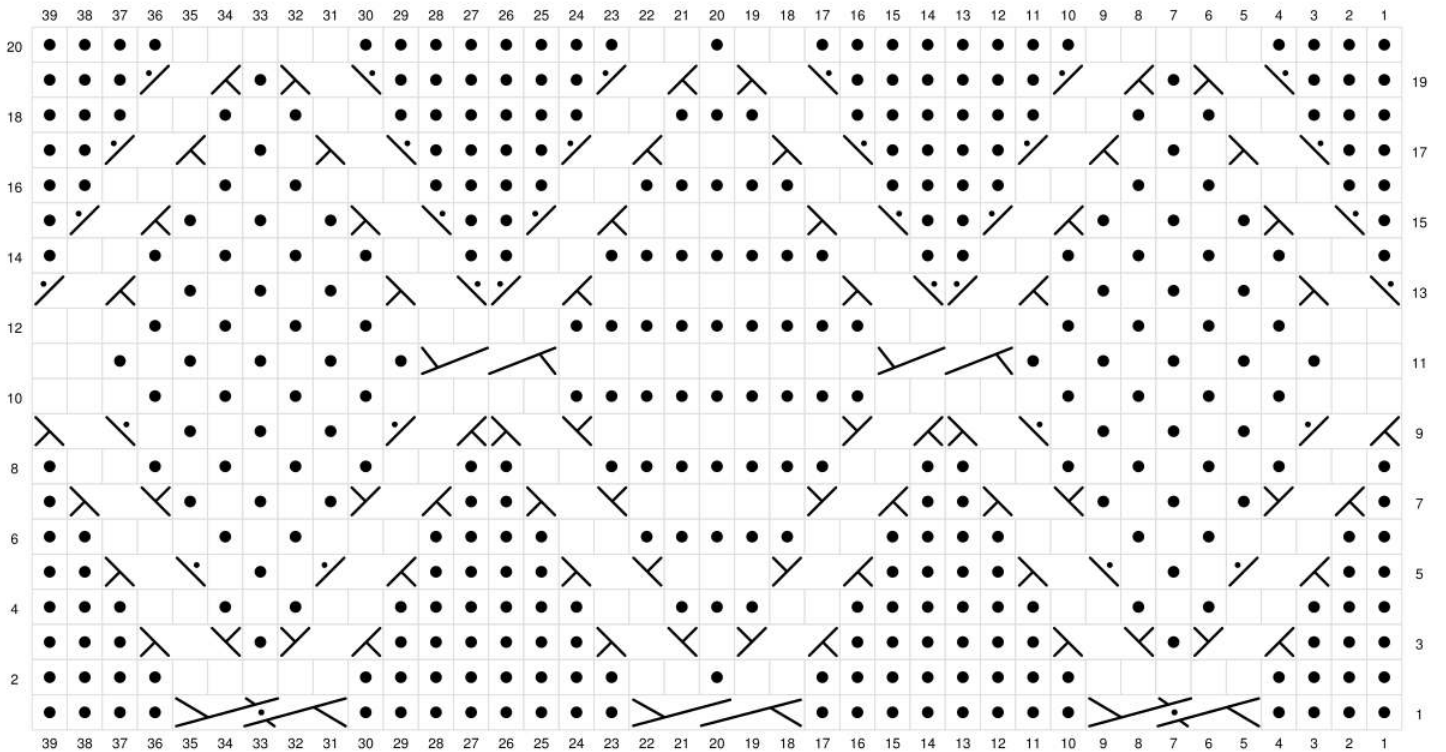
Row 11: K8

Row 13: 2/2 LC, 2/2 RC

Row 15: K8

Row 16: Repeat Row 2

Chart B - Diamond Chart












-  RS: Knit on RS, p on WS
WS: p
-  RS: Purl on RS, k on WS
WS: k
-  S12 sts onto cn and hold at back, k2, k2 from cn
-  S13 sts onto cn and hold at back, k2, [p1, k2] from cn
-  S11 st onto cn and hold at back, k2, p1 from cn
-  S12 sts onto cn and hold at front, p1, k2 from cn
-  S11 st onto cn and hold at back, k2, k1 from cn
-  S12 sts onto cn and hold at front, k1, k2 from cn
-  S13 sts onto cn and hold at back, k2, k3 from cn

Chart B – Diamond Chart (worked over 39 sts)

Row 1 (RS): P4, 2/1/2 RC, p8, 2/3 RC, p8, 2/1/2 RC, p4

Row 2 (WS): K4, p5, k8, p2, k1, p2, k8, p5, k4

Row 3: P3, 2/1 RC, p1, 2/1 LC, p6, 2/1 RC, k1, 2/1 LC, p6, 2/1 RC, p1, 2/1 LC, p3

Row 4: K3, p2, k1, p1, k1, p2, k6, p2, k3, p2, k6, p2, k1, p1, k1, p2, k3

Row 5: P2, 2/1 RPC, k1, p1, k1, 2/1 LPC, p4, 2/1 RC, k3, 2/1 LC, p4, 2/1 RPC, k1, p1, k1, 2/1 LPC, p2

Row 6: K2, p2, [p1, k1] x 2, p3, k4, p2, k5, p2, k4, p2, [p1, k1] x 2, p3, k2

Row 7: P1, 2/1 RC, [p1, k1] x 2, p1, 2/1 LC, p2, 2/1 RC, k5, 2/1 LC, p2, 2/1 RC, [p1, k1] x 2, p1, 2/1 LC, p1

Row 8: K1, p2, [k1, p1] x 3, k1, p2, k2, p2, k7, p2, k2, p2, [k1, p1] x 3, k1, p2, k1

Row 9: 2/1 RPC, [k1, p1] x 3, k1, 2/1 LPC, 2/1 RC, k7, 2/1 LC, 2/1 RPC, [k1, p1] x 3, k1, 2/1 LPC

Row 10: P2, [p1, k1] x 4, p5, k9, p4, [p1, k1] x 4, p3

Row 11: K2, [p1, k1] x 4, p1, 2/2 RC, k9, 2/2 RC, [p1, k1] x 4, p1, k2

Row 12: P2, [p1, k1] x 4, p5, k9, p4, [p1, k1] x 4, p3 (same as row 10)

Row 13: 2/1 LPC, [k1, p1] x 3, k1, 2/1 RPC, 2/1 LPC, k7, 2/1 RPC, 2/1 LPC, [k1, p1] x 3, k1, 2/1 RPC

Row 14: K1, p2, [k1, p1] x 3, k1, p2, k2, p2, k7, p2, k2, p2, [k1, p1] x 3, k1, p2, k1 (same as row 8)

Row 15: P1, 2/1 LPC, [p1, k1] x 2, p1, 2/1 RPC, p2, 2/1 LPC, k5, 2/1 RPC, p2, 2/1 LPC, [p1, k1] x 2, p1, 2/1 RPC, p1

Row 16: K2, p2, [p1, k1] x 2, p3, k4, p2, k5, p2, k4, p2, [p1, k1] x 2, p3, k2 (same as row 6)

Row 17: P2, 2/1 LPC, k1, p1, k1, 2/1 RPC, p4, 2/1 LPC, k3, 2/1 RPC, p4, 2/1 LPC, k1, p1, k1, 2/1 RPC, p2

Row 18: K3, p2, k1, p1, k1, p2, k6, p2, k3, p2, k6, p2, k1, p1, k1, p2, k3 (same as row 4)

Row 19: P3, 2/1 LPC, p1, 2/1 RPC, p6, 2/1 LPC, k1, 2/1 RPC, p6, 2/1 LPC, p1, 2/1 RPC, p3

Row 20: K4, p5, k8, p2, k1, p2, k8, p5, k4 (same as row 2)